

Bonus: Bead cap WOW Jewelry Gay Isber



Mix the two part Apoxie Sculpt clay together until totally combined. Here I have a large pearl and a ball of Apoxie Sculpt. This is BRONZE Apoxie Sculpt



Insert a piece of wire long enough to create a loop at one end and a bit longer on the other end to allow for the new cap.

If the bead only is half drilled, add a touch of E6000 glue to the wire and insert.



Loop one end and push the clay on to the other end.



Envelope the cap with gold leaf or other. Smooth it with your fingertips. Allow to cure for 24 hours.

Add a sealer to the gold for longer wear.



This is a bead where the wire would never go all the way through so I am treating it like it is half drilled. I put glue on the wire and inserted it as far down as possible.



This is the finished bead. I added the Apoxie Sculpt on top like a bead cap and added flat backs and chatons.

Then I added a layer of gold leaf. After it cured (24 hours) add a layer of UV resin or clear fingernail polish for longevity.



Using orbs in jewelry.
This is a small glass orbs.



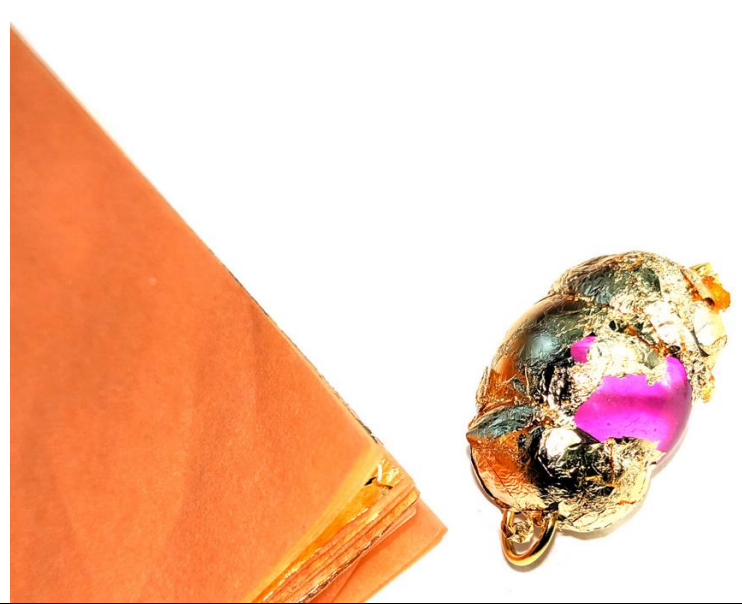
Add a small ball of Apoxie Sculpt to each end.



Insert jump rings into the Apoxie Sculpt, pushing the opening of the ring into the clay.



Add a layer of gold leaf on the Apoxie Sculpt. Clean off the excess using a baby wipe and an old paint brush.



After it is cured in 24 hours add a layer of clear finger nail polish for longer wear.



These are amethyst orbs connected with jump rings.
Note the orb on the end only has one end capped.



This is a larger glass orb. Make a circle of wire that sits about 1/3 of a way down the orb.



Add glue to the wire and place it on the orb making sure that it connects to the orb so it is secure once dried. Let it cure.





Here is it cured. Add Apoxie Sculpt around the wire.







gayisber.com



